



**SWAL**<sup>®</sup>

Since 1998

# WELRO<sup>®</sup>

Fire safety and isolation  
from extremal environment



[www.swal.eu](http://www.swal.eu)

**FASTENERS FOR AGRICULTURE AND COLD STORES**

EN

# TECHNICAL INFORMATION

WELRO and WELRO-XL are modern anchors, designed specially for mounting multi-layer panels and sheet metals operating both in extremal environments and in cold stores and freezers with fire resistance requirements. When using a steel washer in a set with steel screw, fire safety is obtained.

Thanks to the construction and special latch, the connector head is perfectly isolated from the outside and prevents frost and condensation on the connector surface. The EPDM washer, supplied as standard, seals the connection to the sheet metal.

Thanks to excellent combination of physico-mechanical and thermal parameters, polyamide provides exceptional performance. It is characterized by low water absorption, rigidity higher than other materials, thermal resistance, abrasion resistance, hydrolysis resistance, good long-term performance at higher and low temperatures. It has a very wide temperature range of continuous operating at a working temperature from 40° C to + 85° C without changing the technical parameters.

VELRO is resistant to UV radiation. We produce it in all RAL colours.

It is designed to work with SWAL self drilling screws for steel, concrete and wooden construction.

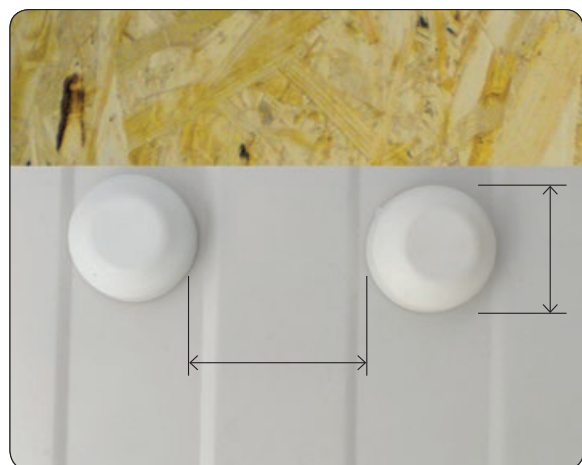
The length and type of screws should be selected according to the type of a base and thickness of a multi-layer panel.

Average failure force	2,50 kN
Fire resistance	YES
UV resistance	YES
Max temp. of continous work	- 40°C
Min temp. of continous work	+85°C
Max short-term temperature	- 85°C
Min short-term temperature	+160 °C



Praxis:

- Pigpens
- Chickencoops
- Halls in the littoral zone
- Cold stores and freezers



*Fitting WELRO to multi-layer panel.*



*WELRO's caps are available in different RAL colours.*



WELRO is dedicated to installation of both wall and roof agro type multi-layer panels with plastic lining, sheet metal covered with plastic or stainless steel sheets as well as to external installation of multi-layer panels in an extremal C4-CX environment.

WELRO can be used in a set with a screw including 19 mm diameter EPDM washer or with 22 mm diameter galvanized steel washer.

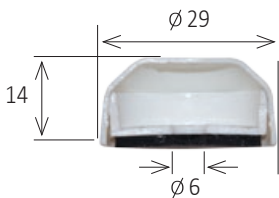
It does not require pre-drilling.

**Material:** modified polyamide with UV add-on

Standard RAL colours: 9010, 9002, 9003, 9006

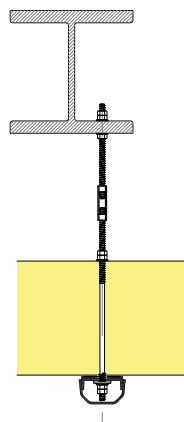
Other colours on request

Construction certificate: European Technical Assessment ETA-21/0376 of 21 June 2021

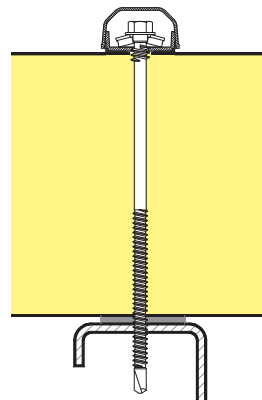


Product name	Dimension mm	Panel thickness mm	Packaging box
WELRO	29 x 14	40 – 300	100

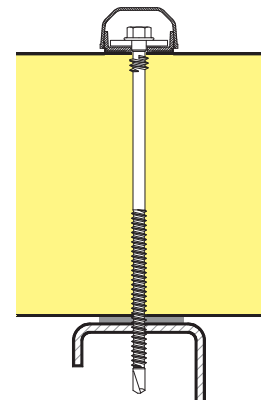
EPDM washer			
EPDM washer	∅ 25 x 6 x 2	–	100



WELRO on metal rod ∅6



WELRO with EPDM washer



WELRO with steel washer

### SELECTION OF CONNECTORS DEPENDING ON THE TYPE OF WORK ENVIRONMENT

Product	Environments								
	Cold store -20°C	Cold store 0°C	Agro, piggery	CX	C5	C4	C3	C2	Fire Safe
LAX *	✔	✔	✔	✔	✔	✔	✔	✔	✘
WELRO*	✘	✘	✔	✔	✔	✔	✔	✔	✔
WELRO-XL *	✔	✔	✔	✔	✔	✔	✔	✔	✔
Carbon steel screw DACRO 1000	✘	✘	✘	✘	✔	✔	✔	✔	✔
Carbon steel screw DACRO 500	✘	✘	✘	✘	✔	✔	✔	✔	✔
Carbon steel screw zinc plated	✘	✘	✘	✘	✘	✔	✔	✔	✔
Stainless steel screw A2	✘	✘	✘	✘	✔	✔	✔	✔	✔

✔ excellent    ✔ good    ✘ not recommended    \* with carbon steel screw

# WELRO-XL<sup>®</sup>

Ideal for cold stores and freezers  
with required fire resistance



Montage movie

WELRO is dedicated to installation of wall and roof multi-layer panels in freezers and cold stores, stainless steel sheets and in protective coatings in production areas designed to fish and meat cutting, external mounting multi-layer panels in extremal C4-CX environment.

WELRO can be used in a set with a screw including EPDM washer (19 mm diameter) or galvanized steel washer (22 mm diameter).

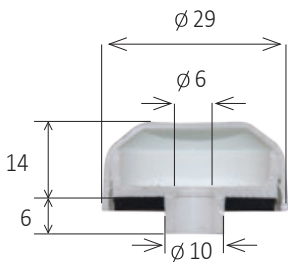
It is required to pre-drill the sheet metal lining with a drill bit of 11 mm in diameter.

**Material:** modified polyamide with UV add-on

Standard RAL colours: 9010, 9002, 9003, 9006

Other colours on request

Construction certificate: European Technical Assessment ETA-21/0376 of 21 June 2021



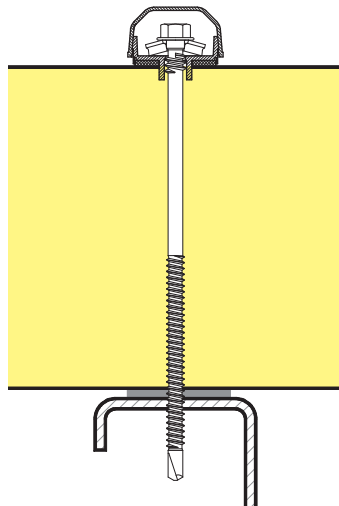
Product name	Dimension mm	Panel thickness mm	Packaging box
WELRO-XL	29 x 20	40- 300	100

#### EPDM washer

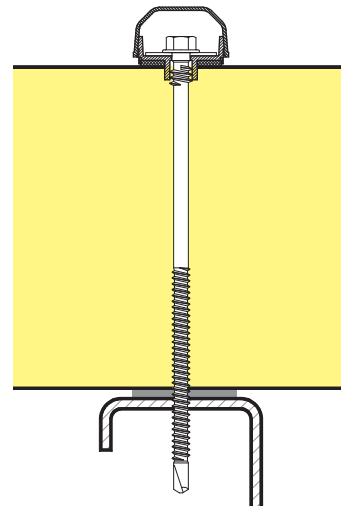
EPDM washer	∅ 25 x 10 x2	–	100
-------------	--------------	---	-----

#### Drill bit

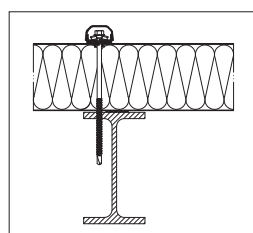
HSS drill bit	∅ 11	–	10
---------------	------	---	----



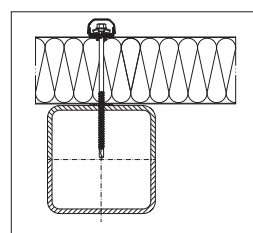
WELRO-XL with EPDM washer



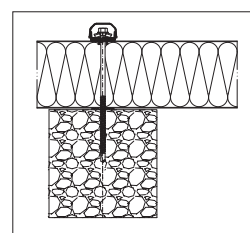
WELRO-XL with steel washer



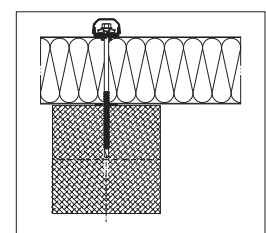
STEEL (IMPACT-R 14)



STEEL (IMPACT-R 6)



CONCRETE (VCAT)



WOOD (VCAT)

WELRO you can use in sets with screws: IMPACT-R and VCAT